



**A profound immersion in the**  
**YAWANAWÁ**  
**Amazonian spirituality**





**AKASHA RETREAT CENTER**

**ITAIPAVA - RIO DE JANEIRO**

**November 12th – 19th, 2026**

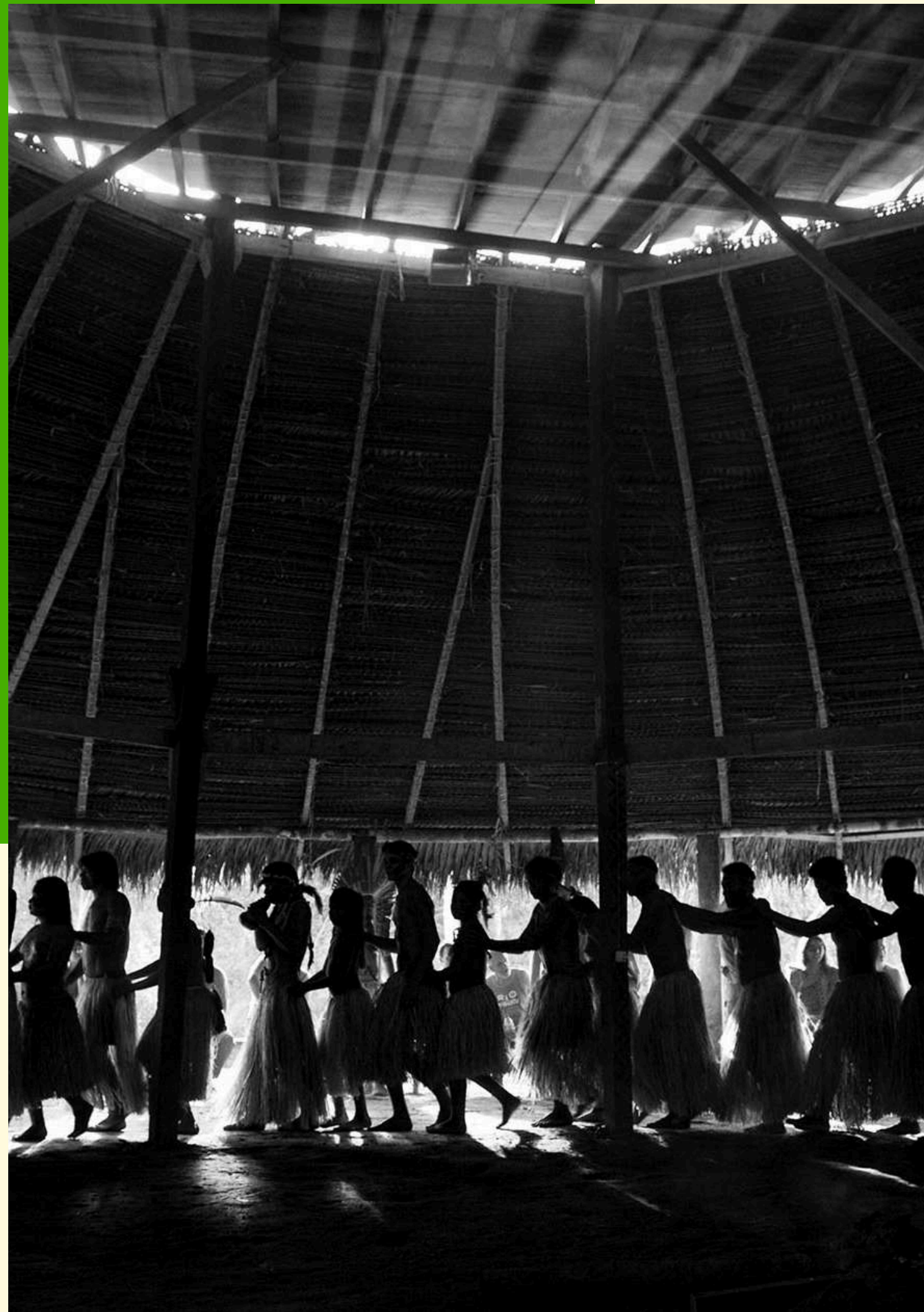
**[www.uniretreats.org](http://www.uniretreats.org)**

# A profound immersion in the Yawanawá Amazonian spirituality

We are deeply honored to invite you to the Akasha Retreat Center in Itaipava for one more edition of **Uni Retreats**, led by **Isku Kua** and representatives of **Nova Esperança Village**, the largest village of the Yawanawá Nation.

Isku Kua is one of the main references of the Yawanawá Nation and one of the Indigenous leaders of the Uni Retreats program. The retreats guided by Isku at our retreat center have been moments of great joy and spiritual healing, and participants consistently share beautiful feedback and testimonials about their experiences.





# A profound immersion in the Yawanawá Amazonian spirituality



For this journey, **Isku Kua will be accompanied by his family and a circle of young spiritual leaders, forming a group of 10 Yawanawá who embody the living strength of the forest.** His family lineage carries profound ancestral knowledge: guardians of sacred songs, traditional healing practices, and ceremonial leadership that has been passed down for generations. Alongside them, the younger generation brings the freshness of renewal — voices, prayers, and visions that ensure the continuity of Yawanawá culture and spirituality into the future.

Together, they represent the union of experience and youth, tradition and renewal, standing as a bridge between ancient forest wisdom and the urgent calls of our present time.

# Isku Kua Yawanawá

For many years, **Isku Kua Yawanawá** supported his father, Chief **Nixiwaka**, in the leadership and administration of **community affairs**. Today, he is the **chief of Nova Esperança (“New Hope”)**, the largest Yawanawá village with more than 300 people.

**Isku Kua is recognized as a prominent leader of the Yawanawá Nation**, with strong representativity both within his community and internationally. He has gone through the **highest spiritual initiations of his tradition**, earning the respect of the elders and establishing himself as a guardian of ancestral knowledge and cultural continuity.

He is also a **talented musician and guitar player**, known for adapting traditional Yawanawá chants to the guitar and sharing them with authenticity and beauty. Frequently traveling to **Europe and the United States**, he carries the spirituality and culture of his people to the world, building bridges between traditions and modern societies.

The depth of his knowledge grows each day through his discipline, humility, and devotion to the spiritual path. The way he conducts the **Uní (Ayahuasca) ceremonies** inspires profound respect, even among the elders, affirming him as a voice of tradition, vision, and strength for the Yawanawá Nation.





# Wakia Un Manee

**Wakia Un Manee** is a **Klamath/Modoc Native American** from North America, a **medicine man, Sun Dancer**, and conductor of **Vision Quest** and **Inipi (sweat lodge)** ceremonies. Raised among the **Lakota and Ojibway**, his path has been deeply shaped by the traditions and culture of these peoples.

He holds degrees in **Psychology and Political Science**, and also studied **Theology**, integrating academic knowledge with Indigenous wisdom. Beyond his spiritual leadership, Wakia has founded and developed **NGOs and charitable organizations** in various communities, dedicated to service and collective wellbeing.

As an **activist**, he has stood on the frontlines defending **Native rights** as well as **environmental and ecological causes**, bringing his strength and voice to global movements. His life's work is focused on **empowering people** to recognize and understand their own capacities, awakening strength, awareness, and clarity to transform their lives.



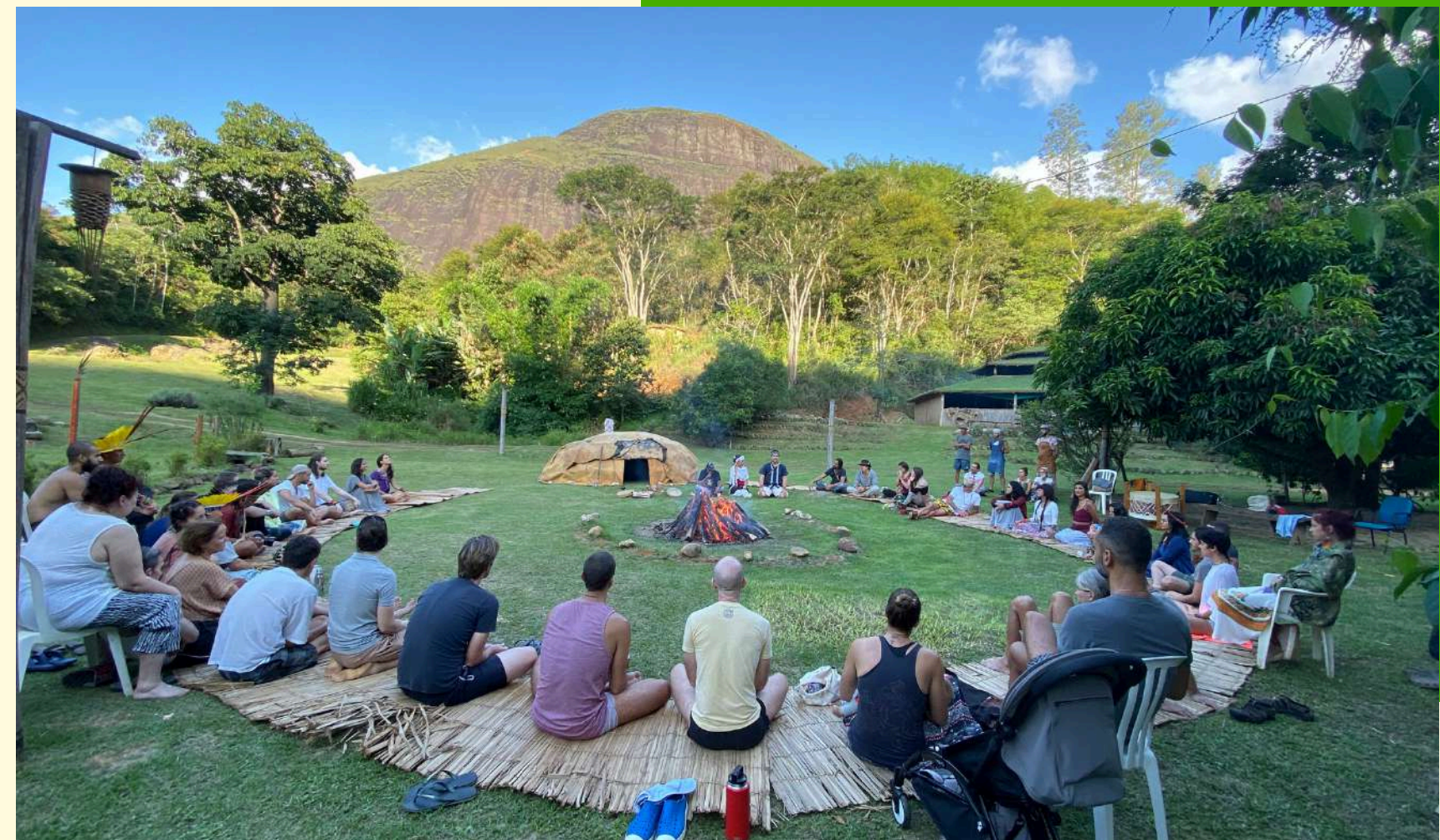
**Nova Esperança Village**, on the Gregório River in Acre, is the largest community of the Yawanawá Nation, home to about 300 people. Today it is led by Chief **Isku Kua Yawanawá**, and remains deeply connected to the legacy of great spiritual masters of his lineage. Among them is **Grandpa Yawa**, an **elder and medicine man**, a guardian of traditional wisdom, highly respected for his dedication to prayers, sacred songs, and the medicines of the forest. His presence is remembered as a living inspiration for the entire community, embodying a direct link to the memory and strength of the ancestors.

Nova Esperança is also home to the **Iskuvakehu – Yawanawá School of Language and Culture**, created to transmit to new generations the spiritual knowledge, language, and stories of the people. Children and youth learn from elders and traditional masters in a process of continuity that keeps Yawanawá identity alive. In this way, Nova Esperança is more than just a village – it is a space of cultural resistance, learning, and spirituality, guided by the strength of its leaders and elders, such as Grandfather Yawa.

# The retreats

The **retreats guided by the Yawanawá** offer a profound immersion into the culture and spirituality of their people. Each retreat includes **three Uni (Ayahuasca) ceremonies**, along with traditional activities such as **sacred kenes body painting, song circles, storytelling, hapé and sananga rituals, teachings on Yawanawá spirituality,** and an **Inipi – sweat lodge**, in the Lakota tradition.

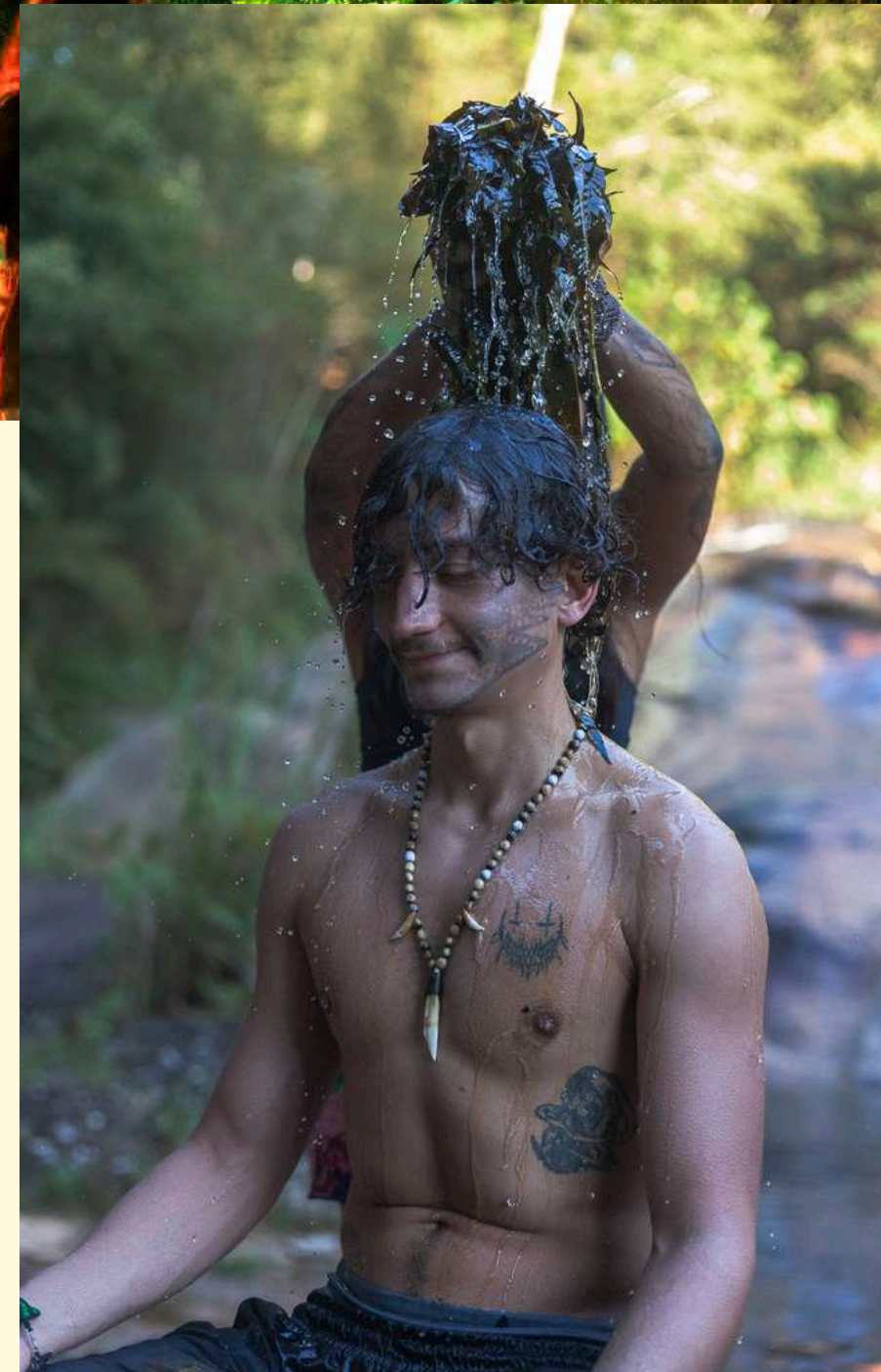
The program expands into **musical experiences** that move both body and spirit, connecting the sacred forest with the creative force of contemporary expression. Guest artists join the Yawanawá in circles of music, chant, and percussion, weaving sonic bridges that celebrate ancestry and open pathways of dialogue between different cultures.





# The experience

Each retreat is **limited to a group of up to 45 participants**, ensuring care, attention, and depth throughout the experience. Nestled in the mountains of Itaipava, the **Akasha Retreat Center** offers a perfect balance of nature and comfort: **eco-built bungalows designed with charm and warmth, healthy meals prepared with fresh, local ingredients**, along with a **traditional herbal sauna** and a **crystal-clear natural pool**. A space created to nourish body, mind, and spirit in harmony with the forest.





## THE YAWANAWÁ

more information about them here:



LEARN MORE

# PROGRAM – NOVEMBER

---

## November 12 – Thursday

- Group meeting in Rio de Janeiro. Transfer from Rio to the mountains of Itaipava – Akasha Retreat Center (2-hour drive).
- Afternoon: Introduction to the retreat and Lakota teachings on the Indigenous perspective of spiritual experiences.
- Evening: Purification in the Inipi – sweat lodge – in the Lakota tradition.

## November 13 – Friday

- Morning: Body painting.
- Afternoon: Integration circle.
- Evening: 1st Uni (Ayahuasca) ceremony, with Rapé and Sananga.

## November 14 – Saturday

- Afternoon: Spiritual and cultural activities with the Yawanawá.

## November 15 – Sunday

- Morning: Spiritual and cultural activities with the Yawanawá.
- Afternoon: 2nd Uni (Ayahuasca) ceremony, with Rapé and Sananga.

\*\* The program is subject to change.



# PROGRAM – NOVEMBER

---

## November 16 – Monday

- Morning: Visit and care of the Forest-Garden (Agroforestry).
- Afternoon: Lakota Teachings.

## November 17 – Tuesday

- Morning: Spiritual and cultural activities with the Yawanawá.
- Afternoon: Spiritual and cultural activities with the Yawanawá.
- Evening: 3rd Uni (Ayahuasca) ceremony, with Rapé and Sananga.

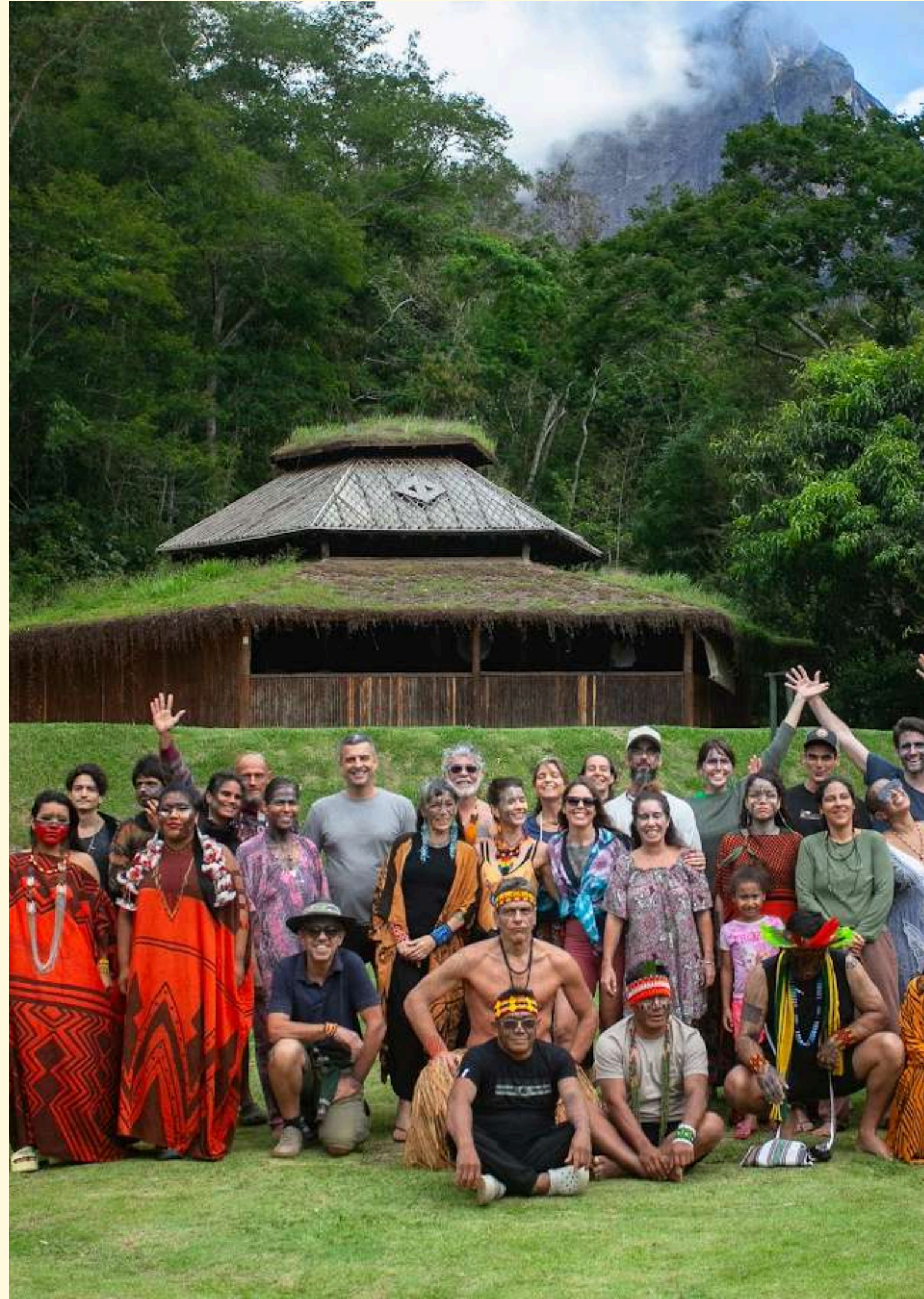
## November 18 – Wednesday

- Afternoon: Integration circle.
- Evening: Closing Circle with the Yawanawá family and Wakia Un Maniee.

## November 19 – Thursday

- Afternoon: Collective transport from Akasha Retreat Center back to Rio de Janeiro for those returning.

\*\* A programação está sujeita a alterações.



## IN ADDITION TO THE MAIN CEREMONIES, THE PROGRAM ALSO INCLUDES:

Spiritual teachings, Traditional activities, Rapé circles, Storytelling circles, Body painting, Herbal sauna, breakfast, lunch and dinner.

## THE RETREAT INCLUDES:

- Interview and integration with Uni Retreats' specialized psychologists;
- Ground transportation from Rio de Janeiro to the Akasha Retreat Center in Itaipava;
- 7 nights of accommodation in shared bungalows at the Akasha Retreat Center (maximum of 3 people per room);
- 3 daily meals throughout the entire stay at the Akasha Retreat Center;
- Participation in all medicine ceremonies and sweat lodge;
- Bilingual translators (English/Portuguese);
- Collective ground transportation from the Akasha Retreat Center back to Rio de Janeiro.

## SERVICES AVAILABLE AT AN ADDITIONAL COST:

- Individual sessions with Indigenous leaders;
- Post-retreat follow-up consultation with specialized psychologists;
- **Private transfer** from Rio de Janeiro (GIG airport) to the Retreat Center
- **Laundry service** during your stay
- **Massage and body therapies** with experienced therapists
- **Private accommodation upgrade** (single or double room option)



Click the link to register.







# AKASHA RETREAT CENTER

ITAIPAVA 🌿 RIO DE JANEIRO 🌿 BRAZIL

Located in the mountains of Itaipava, less than 1:30 hours away from Rio de Janeiro International Airport (GIG), the Akasha Retreat Center offers the perfect environment for deep transformational immersions with medicinal plants.

Its lush vegetation, rivers, natural pools, and waterfalls integrate with specially designed spaces for our spiritual retreats.

All facilities at the Center follow principles of bioconstruction, sustainability, integration with nature, and sacred geometry, enhancing the flow of energy.

Our bungalows offer the comfort of an Eco Resort, including a steam sauna with organic herbs harvested from the Center's own garden.

## COMMON AREAS INCLUDE:

Kupixawa – Ceremonial Center, Geodesic Dome, Waterfall, Natural pools, Sauna, and Restaurant.







Kupixawá (Centro Cerimonial)



Bangalôs

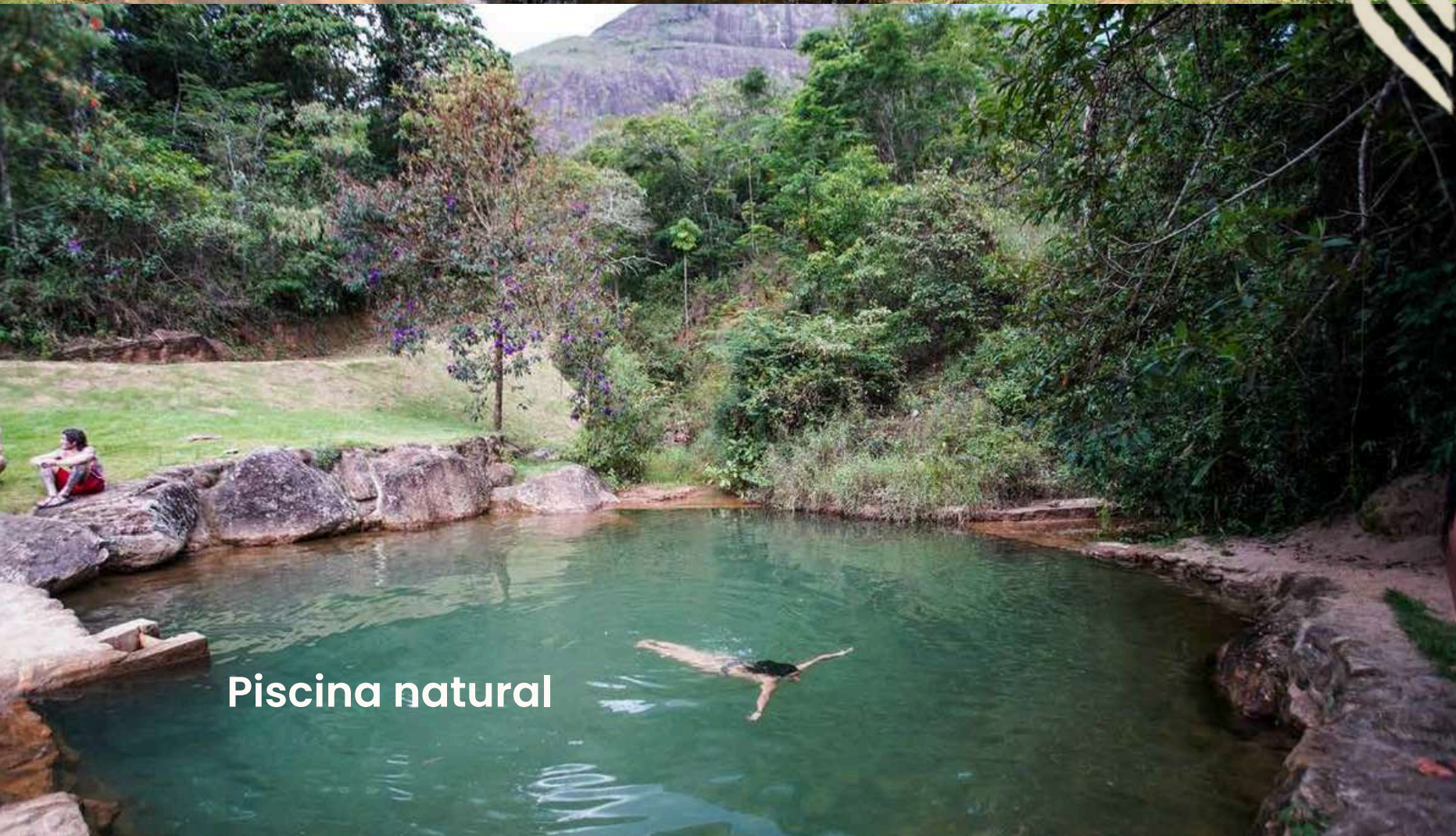




Cachoeira



Kupixawá (Centro Cerimonial)



Piscina natural



Bangalôs

# SOBRE NÓS:

The organizing team of Uni Retreats is composed of founding members of the **Huni Kuin Guardians Group of Rio de Janeiro**, a pioneering group in Brazil in organizing ayahuasca ceremonies led by Indigenous peoples of the Brazilian Amazon. With more than 20 years of experience, they have carried out important projects both in the villages and around the world.

[portaltxai.org](http://portaltxai.org)

[www.igf.org.br](http://www.igf.org.br)







[www.uniretreats.org](http://www.uniretreats.org)